

D:O NAVI

Digital Guided Implant system

A digital implant system designed with both the patient and the clinician in mind.

D:O IMPLANT

DIO NAVI

DIGITAL GUIDED IMPLANT SYSTEM

A digital implant system designed with both the patient and the clinician in mind.

DIO NAVI supports minimally invasive treatment planning and utilizes 3D computer-guided simulation to establish precise implant placement strategies.

It is one of the most advanced surgical systems that maximizes the accuracy of surgery and enables safe surgery using Surgical guides.

The entire process, from diagnosis to implant procedure, is digitalized, eliminating the hassle and potential for errors associated with analog methods.



Supporting treatment planning tailored to the patient's condition.



Providing a workflow designed with the post-procedure recovery process



Supporting treatment planning with a minimally invasive approach



Providing surgical guides adaptable to a wide range of clinical cases

CONVENTIONAL IMPLANT PROCEDURES

- 1 Consultation and radiographic imaging, including X-rays
- 2 Primary implant placement and suturing
- 3 Suture removal with disinfection and clinical examination
- 4 Secondary surgical procedure
- 5 Dental impression taking
- 6 Provisional prosthesis placement
- 7 Final Prosthetic restoration

DIGITAL IMPLANT DIO NAVI PROCEDURE

- 1 Consultation with 3D CT Imaging and Digital Intraoral Scanning
 - 2 DIO NAVI Surgery with Provisional Prosthesis Placement
 - 3 Disinfection and Clinical Examination
 - 4 Final Prosthetic Restoration
- ✓ Enhancing the entire clinical process through a digital-based workflow

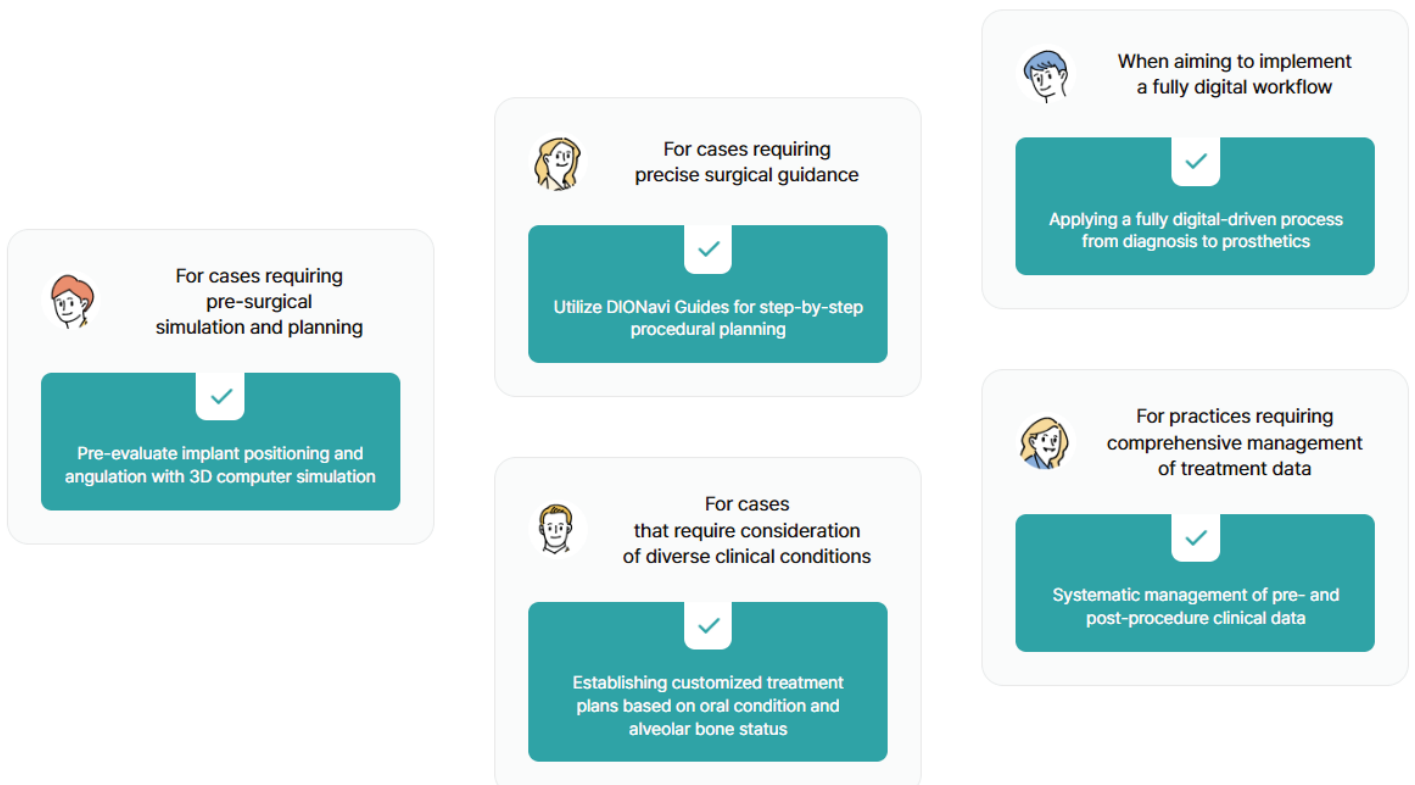
DIO NAVI DIGITAL WORKFLOW

It provides a guiding function that supports implant placement pathway planning by considering key anatomical factors such as bone width, bone quality, nerve positioning, and spacing between adjacent teeth.

Workflow Support for Dentists



KEY POINTS OF UTILIZING DIGITAL DIO NAVI



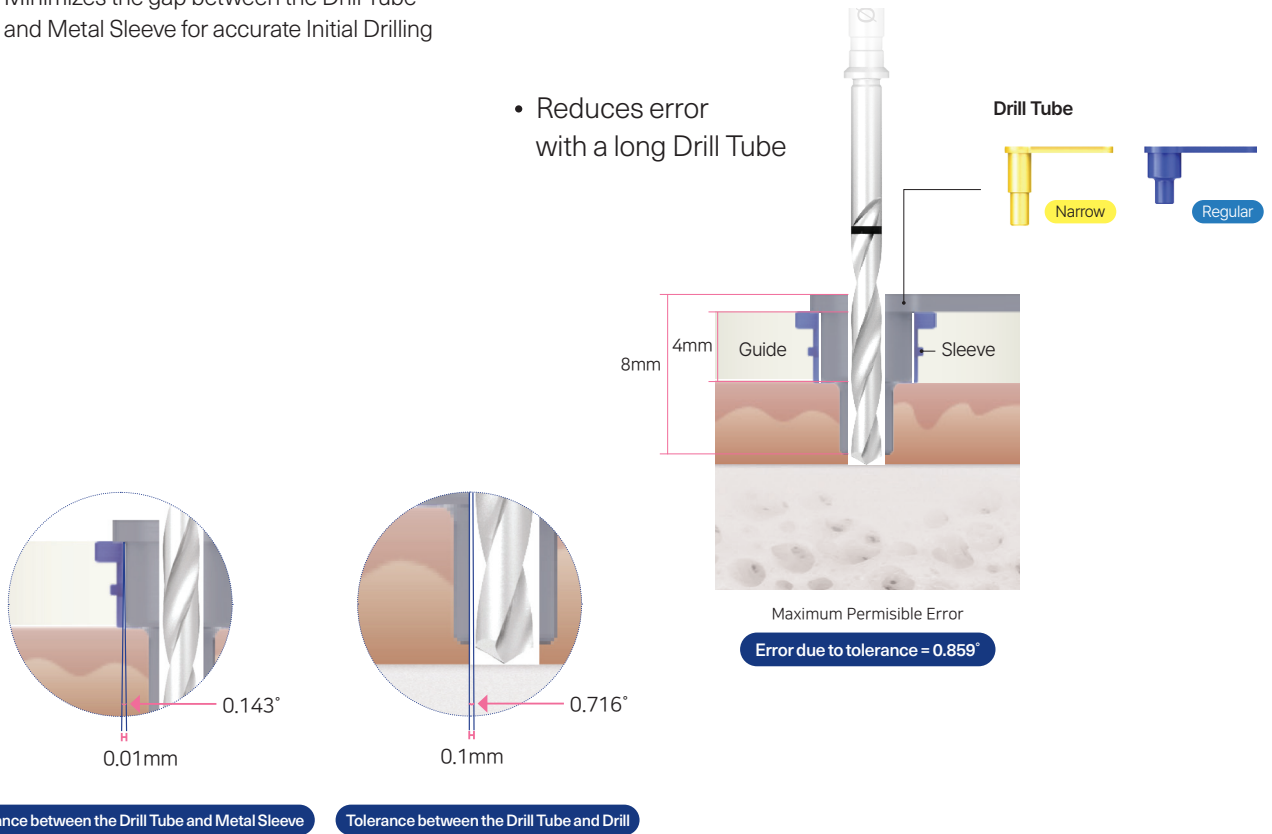
* Treatment planning and clinical outcomes may vary depending on the patient's oral condition and specific clinical circumstances.

DIO NAVI is Accurate!

01 Minimizes tolerance error

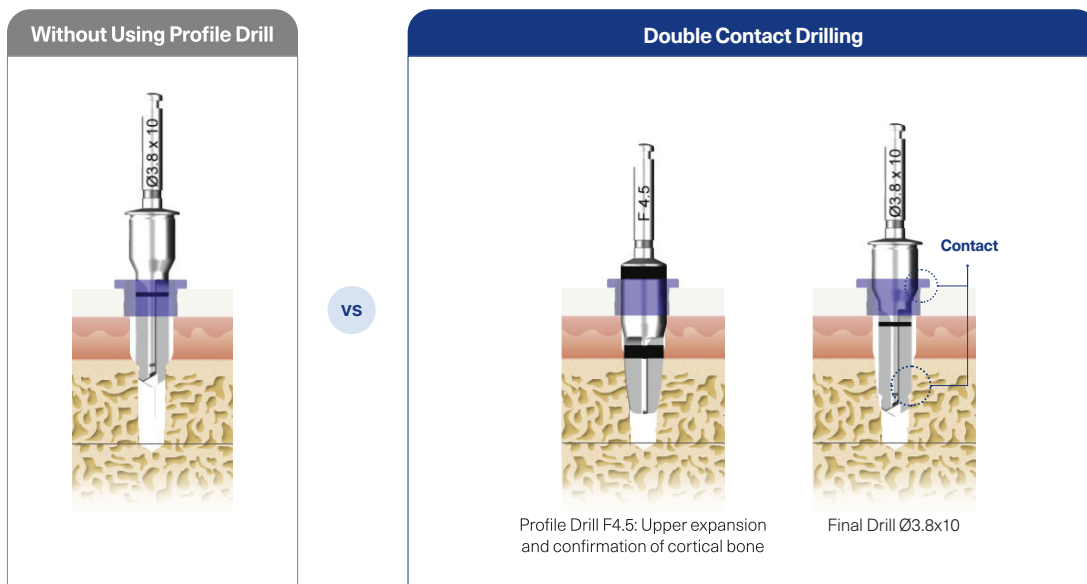
- Minimizes the gap between the Drill Tube and Metal Sleeve for accurate Initial Drilling

- Reduces error with a long Drill Tube



02 Minimizes error with Double Contact Drilling

- A dedicated Drilling Protocol takes into account bone characteristics and drill characteristics, resulting in two contacts within the Sleeve and bone, minimizing error along the previous drilling direction.





Video: Introduction to DIONavi.

DIO NAVI is Safe!

01 No Guide Chip

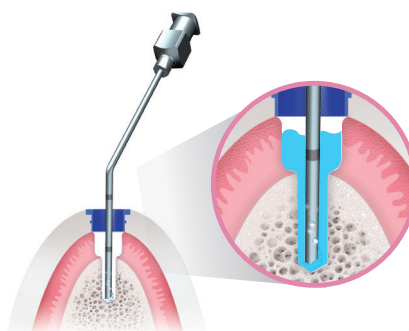
Metal Sleeve is attached as a standard to the guide to prevent guide deviation during drilling

Guide chip has a negative impact on the treated area



02 Prevention of Bone Heating

Cooling is possible with a metal needle even in deep bone areas

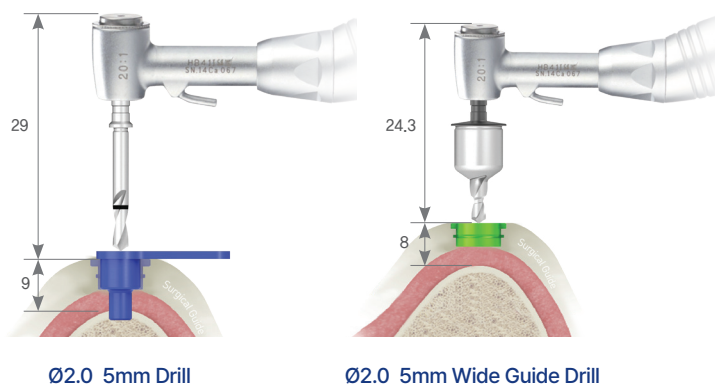


Effect of Metal Needle

- Prevention of bone heating
- Cooling to the depth of the hole
- Removal of internal particles

DIO NAVI is Convenient!

01 Convenient treatment even in difficult cases such as restricted mouth opening cases with DIO NAVI wide kit and green sleeve with lesser drill height

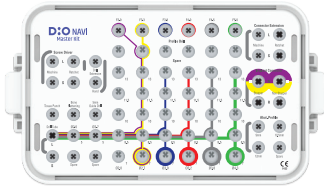


DIO NAVI Kits

Line-Up DIO Navi Digital Implants & Kits



Fixture Size	Narrow		Regular					Wide		
DIONavi. Sleeve Size	Narrow		Standard			Wide			X	
	3.0	3.3	3.8	4.0	4.5	5.0	5.5	6.0	6.5	7.0

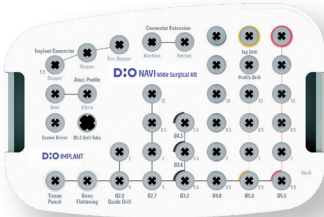


Regular Case

DIONavi. Master Kit

Off-Set height : 9 / 10.5 / 12mm

[CODE : UF 05]

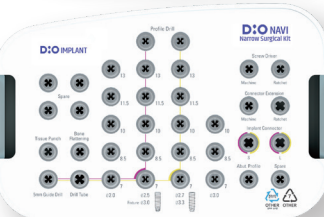


Wide Case

DIONavi. Wide Kit

Case with small mouth opening / Case with posterior region
Off-Set height : 8 / 9.5mm

[CODE : UF 11]

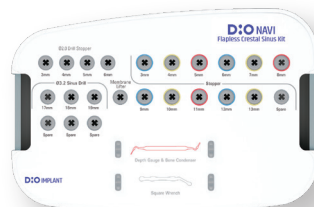
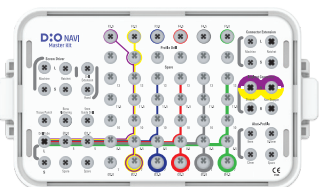


Narrow Case

DIONavi. Narrow Kit

Case with narrow bones / Case with narrow interdental space
Off-Set height : 12mm

[CODE : UF 14]

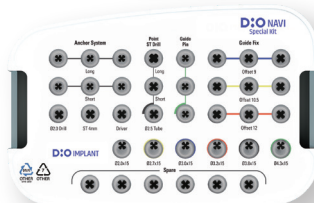
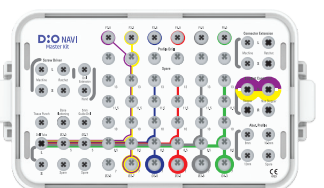


Sinus Case

DIONavi. Master Kit & DIONavi. Sinus Crestal Approach Kit

Hydraulic sinus lifting kit

[CODE : SMK 02]



Edentulous Case

DIONavi. Master Kit & DIONavi. Special Kit

Free end case / Case of immediate implantation after tooth extraction
Including 15mm final drill

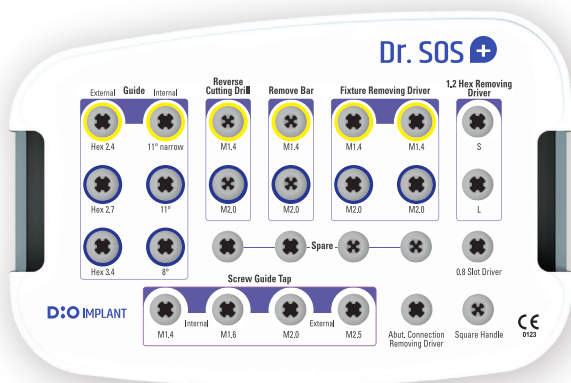
[CODE : SGF 02]

New Dr. SOS+ Kit

Perfectly Resolve Implant Complications with a Single Kit



Video: Introduction to New Dr. SOS+ Kit



01 Solve all cases with one kit

Capable of solving all cases such as fixture fracture, abutment fracture, screw fracture, 1.2 hex deformation, etc.

02 Simple components

Consists of 17 simple tools to solve all cases

03 Intuitive fixture removal protocol

Simple yet reliable performance, as it is completed with just a reverse rotation after attaching the Universal Driver.

04 Various screw removal protocols

Applications



01 Adjacent Bone Loss

02 Crack

03 Partial Fracture (Vertical)

04 Complete Fracture (Horizontal)

05 Damage to the internal structure of the Fixture

06 Abutment Fracture

07 Wear of Healing/Cover Screw Hex

08 Abutment Screw Fracture

09 Wear of Abutment Screw Hex



DIGITAL FULL ARCH GUIDE SYSTEM

A comprehensive implant treatment support system
Powered by a digital workflow

The DIO NAVI Full Arch supports comprehensive treatment planning through a fully digital workflow enables customized prosthetic connection strategies tailored to diverse clinical situations in both implant placement and restorative phases.

A seamless final prosthesis fabrication workflow is provided utilizing extraoral scan data.



Workflow Support for Dentists

DIO NAVI Full Arch Workflow



Step 1

Diagnosis



Step 2

Surgery & 1st PB Setting



Step 3

1st PB Scan



Step 4

2nd PB Setting



Step 5

2nd PB Scan



Step 6

Final Prosthetic Setting

KEY FEATURES OF DIO NAVI FULL ARCH



Diagnosis and Treatment Planning

Leverage patient-specific oral data to provide critical insights that enhance treatment planning and decision-making.



Surgical and Prosthetic Phases

With the DIO NAVI Guide, implant placement and provisional restoration planning are optimized. Flexible prosthetic connection pathways support diverse clinical situations.



Digital Prosthetics

Digital prosthetics fabricated from scan data can be utilized in the treatment planning process, providing a reference workflow that clinicians can rely on.



Maintenance

The connection between the implant and prosthesis is designed with long-term maintenance in mind, and its clinical integrity can be verified through regular check-ups.

For Patient

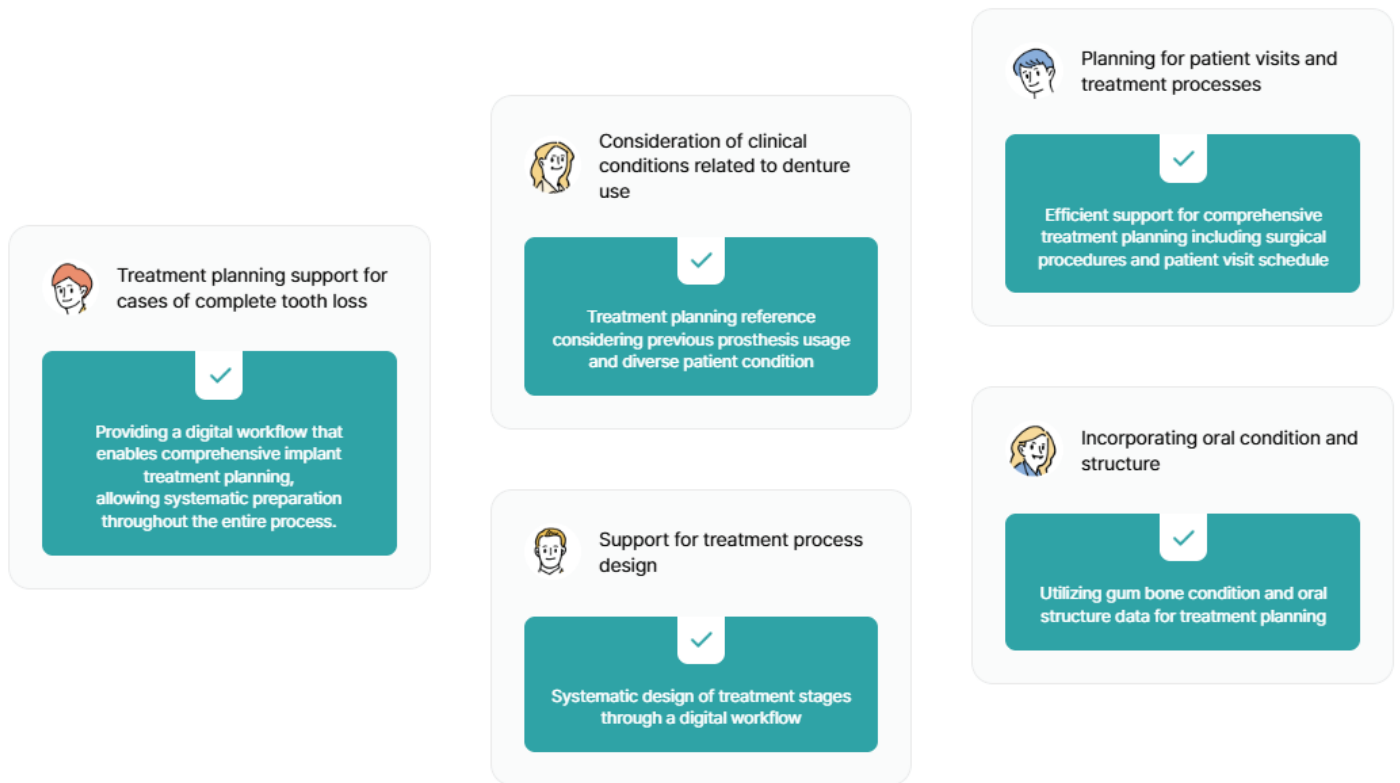
- ✓ Plan the entire implant treatment process through a digital workflow, enabling systematic preparation for each stage of care.
- ✓ DIO Implants are applied across diverse clinical settings, supporting treatment planning based on standardized protocols.
- ✓ Utilizing digital data that reflects the patient's oral structure and morphology
- ✓ Designed with maintenance

* Treatment planning and clinical outcomes may vary depending on the patient's oral condition and specific clinical circumstances.

For Dentist

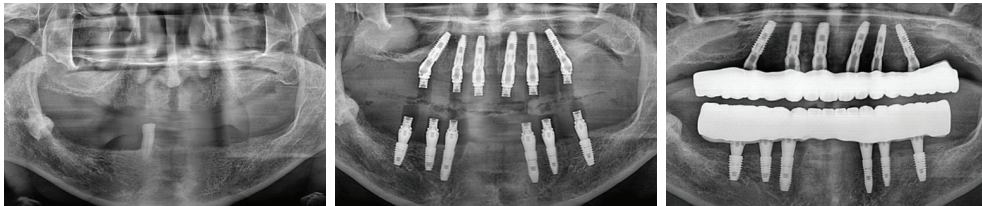
- ✓ Supporting treatment planning for fixed provisional prosthesis connection during the implant placement process
- ✓ Pre-surgical 3D simulation enables prior review of the implant placement pathway and restorative process
- ✓ Splinted type Full Zirconia final prosthesis
- ✓ Supporting the planning and workflow for screw-retained type prosthesis connection

KEY POINTS OF UTILIZING DIO NAVI FULL ARCH



CLINICAL CASES

Panorama X-ray



Provisional Bridge Setting



Final Restoration Setting



D:O Probo Z

Printer optimized for printing prosthesis

UNSTOPPABLE
PERFORMANCE
EVOLUTION



Specification



Dimension
300x378x484mm



Light Wavelength
405nm



Type
DLP



XY Resolution
55µm



Weight
20kg



Build Volume
105.6x59.4x80mm



Touch Screen
7inch



Layer
25, 50, 100µm

D:O IMPLANT


The Oral Care Solution Creator



Follow us for latest updates



Team Marketing, DIO India
730-333-1511

 dioimplant.co.in

DIO DIGITAL IMPLANT INDIA PVT. LTD.

Head Office

Gurugram Office: 7061, 7062, 708, 709, 7101, 7102, 7111 & 7112, 7th Floor, Block B, Vipul Square, Sushant Lok, Phase-I, Gurugram, Haryana - 122009
Contact: 0124-4751803, E-mail: info@dioimplant.co.in

Branch Office

Mumbai Office: Unit No. 605, Business Suites 9, Plot No. 93 S.V. Road, Santacruz, West Mumbai - 400054
Contact: 022-46021803

Branch Office

Bengaluru Office : No.18/6, First Floor, Cunningham Road, Bengaluru – 560052

Branch Office

Chennai Office : No. 45, 3rd Floor Ashok Towers, KB Dasan Road, Nandhiniee Sweets, Alwarpet - 600018, Chennai